

A NEW VENTURE THEATRE PRODUCTION 2015

MURDER

INCEST

MADNESS

REVENGE

# HAMLET

A FAMILY TRAGEDY

BY WILLIAM SHAKESPEARE

ADAPTED AND DIRECTED BY STEVEN O'SHEA

**NVT**

**NEW  
VENTURE  
THEATRE**

Bedford Place, Brighton BN1 2PT

**PERFORMANCES:**

Friday 16th to Saturday 24th January 7.45 pm

Sunday matinee 18th January 2.30 pm

No show Sunday evening or Monday

**BOX OFFICE INFORMATION: 01273 746118**

**ONLINE BOOKING: [www.ticketsource.co.uk/newventuretheatre](http://www.ticketsource.co.uk/newventuretheatre)**

Registered Charity No. 268607

**50p**

# HAMLET

by William Shakespeare

*adapted and directed by Steven O'Shea*

So, Hamlet. Often acclaimed as the greatest play ever written. Certainly the most widely seen, read, quoted and analysed piece of dramatic literature in the history of theatre. Consequently staging a production of this most iconic, revered and familiar of plays can be a daunting prospect. With trepidation I embarked on the task of directing this production, primarily because I am such a huge Shakespeare fan and Hamlet is my favourite of his plays. This was not always the case, however.

Many years ago, having set out on a career as a budding actor I decided I had better find out what the big deal was with this Shakespeare stuff. Having determined that it would be best to start off with his most famous play, I bought a copy of Hamlet and reading it, found that I barely understood a word. Undeterred, a few visits to theatre to watch various productions of his plays followed which left me none the wiser. I eventually concluded that, quite simply, Shakespeare was not for me. I suspect I am not alone in this being my initial experience of his works.

Everything changed, however, when I was dragged to see a touring production of Hamlet directed by the esteemed Swedish film director, Ingmar Bergman, performed entirely in Swedish. How, I protested, was I supposed to understand a production of Hamlet in a foreign language when I couldn't comprehend what was going on when it was in English!

Suffice to say my Shakespearian epiphany took place that evening. Not only was I entranced and captivated throughout every moment of the production but more significantly, I understood everything that took place on that stage. I left the theatre that night a Shakespeare convert.

Since then my journey through the works of Shakespeare has brought me much enrichment, delight and pleasure. His wonderful characters, compelling dramatic situations, the beauty and power of his glorious use of language and his unsurpassed understanding of the human condition in all its manifold diversity and complexity, ensure that his position as the world's greatest playwright remains indisputable.

*Steven O'Shea*

## Cast

<b>Claudius</b> <i>(King &amp; brother of the late King Hamlet)</i>	Jim Calderwood
<b>Gertrude</b> <i>(Queen, wife of Claudius &amp; former wife of King Hamlet)</i>	Sarah Davies
<b>Hamlet</b> <i>(son of the late King Hamlet &amp; of Gertrude)</i>	Jonny Parlett
<b>Polonius</b> <i>(counsellor to the King)</i>	Jerry Lyne
<b>Laertes</b> <i>(son of Polonius)</i>	James Harkness
<b>Ophelia</b> <i>(daughter of Polonius)</i>	Lily Crossfield
<b>Ghost</b>	Mike Stubbs

The production runs approximately 2 hours including a fifteen minute intermission.



Prince Hamlet's world is in turmoil due to the sudden death of his father, King Hamlet, and what he considers to be his mother's unseemly haste in marrying the late King's brother and successor to the throne . . .

## Production Team

<b>Director</b>	Steven O'Shea
<b>Assistant Director</b>	Mike Stubbs
<b>Stage Management</b>	Pauline Rospigliosi & Javaria Burki
<b>Production Manager</b>	Javaria Burki
<b>Lighting &amp; Set Design</b>	Strat Mastoris
<b>Sound Design</b>	Alistair Lock
<b>Sound Operation</b>	Tim Metcalfe
<b>Lighting Operation</b>	Alex Epps & James McCauley
<b>Costume Design</b>	Isabel Aidallbery
<b>Hair &amp; Makeup</b>	Kate O'Shea
<b>Poster Design</b>	Strat Mastoris
<b>Photography</b>	Jezz Bowden
<b>Movement Director</b>	Ulrike Schilling
<b>Swordfight Choreographer</b>	Michael Grimwood
<b>Voice Coach</b>	Christine Stubbs
<b>Publicity</b>	Dan Walker
<b>Set Construction</b>	Strat Mastoris, Tomasz Baremiecki & George Walter
<b>Props</b>	Trish Bayliss
<b>Tailor</b>	Ulrike Schilling
<b>Technical Consultant</b>	Chris Pugh
<b>Programme Design</b>	Tom Kitch
<b>Health &amp; Safety</b>	Ian Black
<b>Costumes</b>	Supplied by Moss Bros & Gladrags

*We would like to thank Uli Schilling, Rod Lewis, James Newton, Chris Jenkins and as always our appreciation and gratitude to the Front of House, Bar staff and Box-Office teams.*

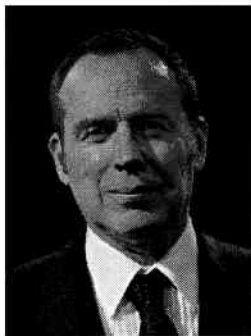
# Windlesham School



An independent school and nursery for boys and girls from 3 to 11 years, with strong links to a range of state and independent secondary schools at scholarship level.

Contact the School Admissions Secretary on 01273 553645  
or email [info@windleshamschool.co.uk](mailto:info@windleshamschool.co.uk)

190 Dyke Road, Brighton, East Sussex BN1 5AA · [www.windleshamschool.co.uk](http://www.windleshamschool.co.uk)



## **Jim Calderwood (Claudius)**

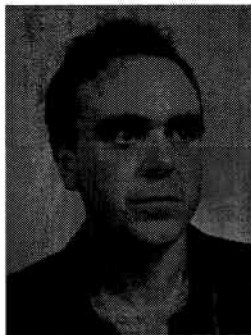
This will be the second time Jim has performed in an NVT production of Hamlet, having previously appeared as Horatio.

He has over 30 years experience with roles for theatre, film, radio, and podcasts. His most recent appearances at the NVT include as Gethin Price in 'The Comedians', Stanley in 'The Birthday Party', Charles Guiteau in 'Assassins' and Deeley in 'Old Times'.



## **Sarah Davies (Gertrude)**

Sarah has enjoyed a range of roles at the NVT, among her most recent being Maggie in 'Dancing at Lughnasa', Dolly in 'The Steamie', Nora in 'Bold Girls', Joan in 'Far Away', Penelope in 'God of Carnage' and the title role in 'Medea'. She collectively devised and directed 'The Building' and 'Talking Dog'. She enjoys physical theatre and teaching drama in a range of contexts including the upcoming 'Devising with Davies' workshops. She also takes great pleasure in running the NVT Youth Theatre and is a committed clown.



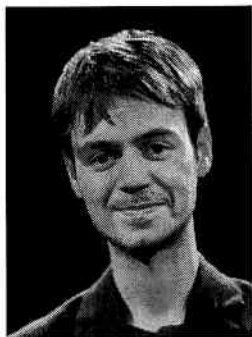
## **Jonny Parlett (Hamlet)**

Jonny most recently starred as Hedwig Schmidt in the 2014 Brighton Fringe Festival production of 'Hedwig and the Angry Inch'. Other roles include Podraic Osborne in Martin McDonagh's 'Lieutenant of Inishmore' and James Hennesey in Neil Simon's 'Biloxi Blues'. He has collaborated on devised projects 'The Building' at NVT and 'Better Days' produced for Brighton Fringe 2013. He is currently writing sketch comedy and his first dramatic short.

## **Mike Stubbs (Ghost)**

Prior to moving to Brighton in 2005 Mike did most of his acting at Trinity Theatre in Tunbridge Wells. Among his Shakespearian plays were 'Henry V', 'The Tempest', 'As You Like It', 'Merry Wives', 'Macbeth' and 'Midsummer Night's Dream'. Other plays and musicals included 'Oh What a Lovely War', 'Cowardy Custard', 'Blicke Spirit', 'A Little Night's Music', 'Cabaret', 'Tom Jones' and many Old Time Music Halls.

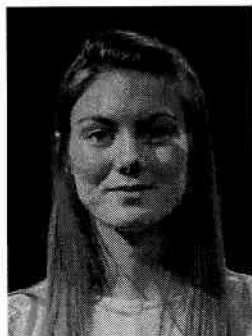
Since arriving in Brighton he has directed 'Mme Y', 'The Ugly One' and 'Nora's Special Day', acted in 'It's A Wonderful Life' and assisted on many other productions at NVT.



### **James Harkness (Laertes)**

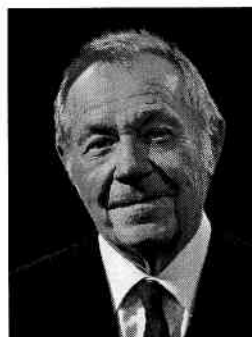
James' previous work includes several productions with the Sussex University Drama Society. His roles include Martin in 'The Goat' by Edward Albee, Rev. Hale in 'The Crucible' by Arthur Miller, and Bernie in 'Sexual Perversity in Chicago' by David Mamet.

He studied Film Studies at the University of Sussex and has written and acted in several short films.



### **Lily Crossfield (Ophelia)**

Lily Crossfield is aged 23. Originally from the North of England, she moved to the South Coast to complete an Undergraduates degree in Drama and Performance at Portsmouth University, later relocating to Brighton. This will be her first performance since having left University and she looks forward to many more ahead. Lily intends to further her education by doing a Masters in Performance Studies and writing.



### **Jerry Lyne (Polonius)**

Over the years Jerry has appeared in a variety of productions including as Willy Loman in 'Death Of A Salesman', Mel Edison in 'Prisoner Of 2nd Avenue', Kent in 'King Lear', Iago in 'Othello', Truffaldino in 'Servant Of Two Masters', Eddie Waters in 'The Comedians' and Gregory Solomon in 'The Price'.

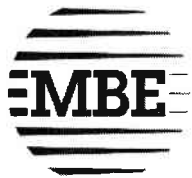
He has directed a number of plays including 'Bold Girls' and 'Iron' by Rona Munro, 'Boston Marriage' by David Mamet, 'Fool For Love' by Sam Shepard and 'Not About Heroes' by Stephen MacDonal.

### **Steven O'Shea (Director)**

'Hamlet' marks Steven's fourth directorial production at the NVT following 'Speed the Plow' by David Mamet (2011), 'Kvetch' by Steven Berkoff (2012), and 'Old Times' by Harold Pinter (2014).

He currently runs the Working Toward Performance drop in acting classes in Brighton:  
[www.workingtowardperformance.co.uk](http://www.workingtowardperformance.co.uk)

**This production is dedicated to Aaron Mullen, without whom . . .**



# MAIL BOXES ETC.®

- Print & Copy
- Office Services
- Stationery
- Packing & Shipping
- Packing Materials
- Post & Parcels

Tel: 01273 70 60 20  [www.mbebrighton.co.uk](http://www.mbebrighton.co.uk)

Email: [print@mbebrighton.co.uk](mailto:print@mbebrighton.co.uk)  91 Western Road, Brighton. BN1 2NW



*Bringing business training alive through actors*

[www.bluestarfishconsulting.com](http://www.bluestarfishconsulting.com) 0845 017 0742

email [info@bluestarfishconsulting.com](mailto:info@bluestarfishconsulting.com)



## DEEPDENE SCHOOL & NURSERY

*Nursery - 6 mths to 4 yrs*

*School - 4 yrs to 11 yrs*

Traditional Caring Nursery & Primary Education

**Helping children become  
confident, competent, considerate & courteous**

195 New Church Road, Hove BN3 4ED

[www.deepdeneschool.com](http://www.deepdeneschool.com) Tel: 01273 418984

## **NVT Acting Class**

Monday evenings at 7.30pm for all levels of acting skills. It will cost you just £5.00 per session (£2.50 for NVT Members). First visit is FREE!

## **Contacting the NVT**

For ticket and performance enquiries only, call the Box Office: 01273 746118, or email: [boxoffice@newventure.org.uk](mailto:boxoffice@newventure.org.uk)  
All other enquiries: 01273 746118

## **Become an NVT Sponsor**

Advertise your business to hundreds of local residents with NVT from only £250. For a range of print and web publicity options and opportunities for free show tickets, please contact: [fundraising@newventure.org.uk](mailto:fundraising@newventure.org.uk)

## **Supporting NVT**

We are a membership club, founded in 1947. We perform established plays, both classical and contemporary, and are a showcase for new writing. If you are interested in joining us, please pick up a membership form in the foyer.

In 1983, NVT bought the freehold of this listed Victorian building which needs constant investment to maintain its integrity. To keep NVT going, we rely on the generosity of the community, to provide donations that are essential to the upkeep of the building and the refurbishment of the main auditorium.

For more information on how you can support NVT. Please contact: [fundraising@newventure.org.uk](mailto:fundraising@newventure.org.uk)

Many thanks to our current donors and our special appreciation to our major anonymous donor.

## **FORTHCOMING PRODUCTIONS 2015**

Fri 20th to Sat 28th February

### **The Private Ear & Black Comedy**

by Peter Shaffer

The Private Ear directed by Dan Walker

Black Comedy directed by Ian Black

Fri 20th to Sat 28th March

### **Benefactors**

by Michael Frayn

directed by Tessa Gill

Fri 3rd to Sat 4th April

### **Richard III**

A rehearsed abridged reading

directed by Scott Roberts

Book tickets at:

[www.ticketsource.co.uk/newventuretheatre](http://www.ticketsource.co.uk/newventuretheatre)

## **Youth Theatre (11 to 17 year olds)**

Every Friday, 4.30pm to 6.30pm, from 9th January to 21st March (except 20th February).

The sessions are led by experienced actors, directors, writers and teachers. The first session is free so you can come and try it out before committing. No experience is necessary and everyone is welcome.

For further information, see [www.newventure.org.uk/youththeatre](http://www.newventure.org.uk/youththeatre)

For enquiries, please contact: [youththeatre@newventure.org.uk](mailto:youththeatre@newventure.org.uk)